

SP T LIGHT

Jones-Onslow EMC—Powering the Community Since 1939

2025 November



Grateful for Our Members

As the leaves turn and the days grow shorter, November reminds us to pause and reflect on what truly matters. At Jones-Onslow EMC, our thoughts turn to one very important group—our members. Your trust, engagement, and support are the heart of our cooperative.

This season of gratitude reminds us that JOEMC exists because of you. Your trust, your engagement, and your partnership are what make this cooperative strong. We don't have customers—we have *members*, and that distinction means everything. As a member-owned cooperative, you're not just receiving electricity—you're part of a team that works together to make our community brighter, safer, and more connected.

Throughout the year, we've worked hard to deliver reliable power, enhance technology, and offer programs that make life a little easier. Whether it's investing in system improvements to reduce outages, supporting innovative energy options, or finding new ways to help you save energy and money,

every effort is made with your needs in mind. Your support allows us to continue improving the cooperative you own and we're grateful for it.

We're equally grateful for how our members strengthen this community—from volunteering at local schools and churches to supporting neighbors in need after storms. That same spirit of cooperation and care that defines our membership also defines the communities we serve. It's a reminder that when we work together, we all thrive.

As we gather with family and friends this Thanksgiving, we're reminded that being part of a cooperative isn't just about keeping the lights on—it's about people helping people, investing in our shared future, and building something lasting right here at home.

From all of us at Jones-Onslow EMC, thank you for being the power behind our cooperative. Your continued trust and support inspire us to serve with pride and purpose every single day. Wishing you and your family a safe, warm, and happy Thanksgiving!

What is the ELECTRIC COOPERATIVE YOUTH TOUR?

High school juniors, every generation leaves behind a legacy, footprints that shape the future. The Electric Cooperative Youth Tour is your chance to do the same.

Youth Tour is more than a trip to Washington, D.C.—it's an opportunity to discover your voice, step into history, and begin writing the story only you can tell.

This once-in-a-lifetime experience is designed to prepare students to lead, grow, and make their mark on the world. You'll develop essential leadership skills, connect with peers from across the country, meet with elected officials, and visit world-class museums and monuments.

Best of all? JOEMC covers all expenses for four local high school juniors for this week-long trip in June.

Applications open soon! For more details, visit joemc.com or *follow us* on Facebook and Instagram.



joemc.com



joemc@joemc.com



(910) 353-1940



259 Western Blvd, Jacksonville
1225 Hwy 210, Sneads Ferry

Keep the Feast Flame Free

Thanksgiving is a time to gather with family and friends, share a meal, and give thanks—but it's also one of the busiest days of the year for home cooking fires. As your community electric cooperative, Jones-Onslow EMC wants to help you enjoy a safe and happy holiday by sharing a few simple kitchen safety reminders.

- 1. Stay in the kitchen.** Whether you're roasting a turkey or simmering side dishes, never leave cooking food unattended. Unattended stoves and ovens are the leading cause of kitchen fires. If you need to step away, turn off the burners or ask someone to keep an eye on things.
- 2. Keep flammable items clear.** Dish towels, oven mitts, paper products, and food packaging should be kept at least three feet away from the stove or oven. A clear workspace is a safer workspace.
- 3. Be careful when frying.** If you're deep-frying a turkey, do it outdoors on a flat, open surface—away from structures, trees, and wooden decks. Make sure the turkey is completely thawed and dry before it goes into the oil and never leave the fryer unattended.



- 4. Watch out for children and pets.** The kitchen can get hectic on Thanksgiving Day. Keep little ones and pets at least three feet away from the stove and hot food preparation areas to prevent burns and spills.

- 5. Check your smoke alarms.** Before the big day, test your smoke detectors to ensure they're working properly. Having a working alarm is one of the simplest ways to protect your home and loved ones.

Taking a few extra minutes to follow these safety tips can make the difference between a joyful celebration and an emergency.

From all of us at Jones-Onslow EMC, have a safe, warm, and wonderful Thanksgiving filled with good food, laughter, and gratitude.



Share Energy, Spread Joy with Power Bucks

Do you struggle to find the perfect holiday gift, or do you simply enjoy giving back? Consider Power Bucks.

Power Bucks allows you to make a payment on a fellow member's account—either anonymously or as a gift to place under the tree.

You can also donate to JOEMC, and your gift will be applied to a member in need.

To participate, simply speak to one of our Member Services Representatives at **910-353-1940** to purchase Power Bucks in any amount

of \$25 or above. We'll apply the credit to the account of your choice, and you'll receive a Power Bucks card via email to share as a gift.

Give the gift of energy and help those in our community who are struggling this season.



With the holiday season approaching and more time spent in the kitchen, consider ways to save energy in the heart of your home. When possible, cook meals with smaller, energy efficient appliances, such as toaster ovens, slow cookers and air fryers. When using the range, match the size of the pan to the heating element. Keep range-top burners and reflectors clean so they reflect heat more efficiently. After your holiday meals are complete, load the dishwasher fully before starting the wash cycle.

Source: energy.gov

SIMPLIFY THE SEASON

Manage Your JOEMC Account Anytime, Anywhere

The holidays are one of the busiest times of the year—between shopping, decorating, traveling, and celebrating with loved ones, your to-do list is already full. The last thing you should have to worry about is managing your electric bill. That's where JOEMC's Member Portal comes in.

Our secure and easy-to-use online Member Portal gives you the freedom to manage your electric account when it's most

convenient for you—day or night, from home or on the go. Whether you need to pay your bill, check your balance, view your electric usage, or update your contact information, it's all right at your fingertips.

Through the Member Portal, you can also sign up for paperless billing, set up auto-pay, and even track your energy use trends to see how colder temperatures or extra holiday lighting may be

affecting your monthly bill. It's a simple, time-saving way to stay in control and avoid surprises—especially during the hustle and bustle of the holiday season. If winter travel or a busy schedule has you away from home, don't worry.

The Member Portal makes it easy to take care of your account from anywhere you have internet access. It's just one more way JOEMC works to make

managing your electric service easier, faster, and more flexible. As you prepare for the holidays, take a moment to log in or create your Member Portal account at **www.joemc.com**. It's the convenient, stress-free way to keep your account in check—so you can spend more time focusing on what really matters this season.

Simplify the season with JOEMC's Member Portal—your power, your way.

“The Member Portal makes it easy to take care of your account from anywhere you have internet access.”





Ricky Maready, CEO

A Message from the CEO The Season of Giving

As the holiday season approaches and the air turns crisp, we're reminded that this truly is the season of giving—a time for gratitude, generosity, and looking out for one another. At Jones-Onslow EMC, that spirit is at the heart of everything we do all year long.

You've probably heard us talk about our "Concern for Community." It's not just a nice phrase—it's one of the core principles that make electric cooperatives like ours different from other utilities. We're not here to make profits for investors; we're here to make life better for the people we serve—our members, our neighbors, and our friends.

Every year, we return money to our members through Capital Credits, a tangible reminder that you are more than a customer—you're an owner. When you support JOEMC, you're investing in your community, too. That same spirit of cooperation powers initiatives like our Power Bucks Program, where members can help other members keep the lights on during tough times. It's a true example of neighbors helping neighbors.

We're also proud to invest in education and opportunity across our service area. Through programs like Bright Ideas, JOEMC provides classroom grants that spark creativity and innovation, supporting more than 200 local educators each year. We also offer college scholarships and sponsor local students through the Youth Tour, giving them the chance to see democracy in action in Washington, D.C., and to dream big about their futures.

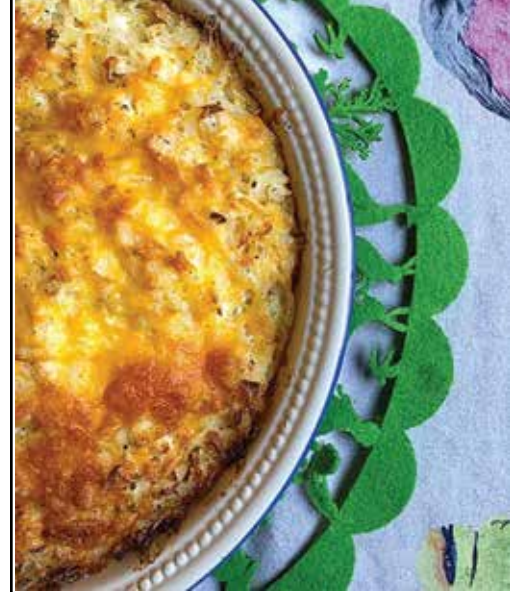
And because we care deeply about safety, our employees visit schools throughout the year to teach students and families how to stay safe around electricity. We believe knowledge is a gift too—and we're always eager to share it.

You'll also find our team volunteering beyond work—coaching youth sports, serving on nonprofit boards, and partnering with community organizations to make eastern North Carolina a better place to live and work. When you're part of a cooperative, giving back isn't an obligation—it's who we are.

Our commitment to you extends to your everyday needs, too. While the season of giving brings joy, we understand it can also bring financial challenges. That's why JOEMC offers tools and programs designed to help members manage energy use and stay on budget. From rebates and energy-saving tips at joemc.com/energywise to payment options like FlexPay, our pay-as-you-go program, and Budget Billing, which helps keep your monthly bill steady, we're here to help you navigate the season with less stress.

At Jones-Onslow EMC, we believe that when we lift each other up, our entire community grows stronger. During this season of giving, we're especially thankful for the generosity and kindness that define our members. Together, we are the power behind our everyday lives.

From all of us at Jones-Onslow EMC, we wish you and your loved ones a joyful, safe, and bright holiday season.



SANDY'S CHEESY POTATOES

Enjoy this dish's cheesy goodness alongside ham for dinner. If there are any leftovers, they're fantastic for breakfast, pairing perfectly with eggs!

Serves: 8

Source: www.carolinacountry.com

INGREDIENTS

- 2 pounds frozen hash browns
- ½ cup minced onion
- 1 can (10¾ ounces) cream of chicken soup
- 1 pint sour cream
- 12 ounces shredded cheddar cheese
(Reserve 4 ounces for topping)
- Pepper to taste

DIRECTIONS

1. Preheat oven to 375 degrees.
2. Combine ingredients and spread into a greased 13- x 9-inch pan. Sprinkle with reserved 4 ounces of cheese.
3. Bake for one hour or until bubbling and browned.

